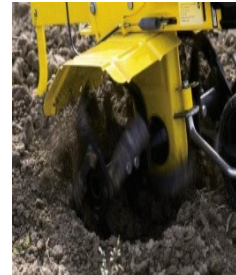




The AL-KO MH350-4 Cultivator offers outstanding performance and value. The strong and effective digging blades, guarantee optimum fine crumbling of soil. The ergonomic designed handles can be adjusted to suit the height of the operator, and a detachable transport wheel is included for easy transportation

POWER CULTIVATOR

Model : MH 350-4



FINE CRUMBLED SOIL

Powerful engines combined with special tiller blades guarantee that one can effectively work the ground into fine crumbled soil even in areas where the ground is hard or there is lot of clay. Particularly useful for seedbed preparation.



INSERTABLE WHEEL

The 350-4 can be easily transported and manoeuvred thanks to insertable transport wheel



ADJUSTABLE HANDLEBAR

Handle bar can be adjusted to any height. Lateral pivoting enables working without having to walk on areas that have already been hoed.

SPECIFICATION – MH 350-4

Work area	Small
Engine	Briggs & Stratton 450
Displacement(ccm)/kW/RPM	148 / 1.9 / 3000
Working width	35 cm
Tiller Blade	4 units ø 25 cm
Forward drive	Yes
Reverse drive	No
Weight	26 kgs.

SOLE DISTRIBUTORS IN INDIA:



Agro - Commercial

8A , Camac Court, 25 B, Camac Street, Kolkata – 700016

Ph : +33-22874206 ; Fax : +33-22867304, email: info@agrocom.in , Web : www.agrocom.in